

MULTIFORME

LIGHT UP YOUR DREAMS



PLANET

design by MULTIFORME

LMP3610-1-DW

PROGRESSIVE

НАСТОЛЬНЫЕ СВЕТИЛЬНИКИ



H1 - BODY HEIGHT 50 cm | 19.7 in

SPECIFICATIONS

W (width) = 15 cm | 5.9 in

D (depth) = 15 cm | 5.9 in

H1 (body height) = 50 cm | 19.7 in

4 kg | 8.8 lb

1 x MAX 60W - E14

CE IP 20 U ENEC

PACKAGING

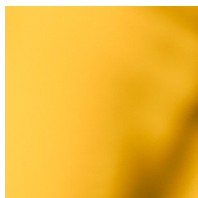
GW = kg | lb

PKG = m³

- Please note that size tolerances in handmade fixtures may range up to 5% of the overall size.
- Instruction sheet is supplied: fixture requires on site assembly by qualified electrician.
- Custom colours, finishes and sizes available, please contact Multiforme for more details.

W - WIDTH 15 cm | 5.9 in

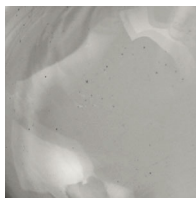
GLASS COLORS



A1 - AMBER



C - CRYSTAL



D - SMOKE

FRAME FINISHES



K - POLISHED
GOLD



N - POLISHED
NICKEL

www.multiforme.eu
Mail: info@multiforme.eu
Tel: +39 049 938 7669

MULTIFORME