

# MULTIFORME

LIGHT UP YOUR DREAMS

PL7670-2  
MULTITUDES  
ПОТОЛОЧНЫЕ

## HYDISCUS

design by Multiforme



$H_{tot} = H1 + H2$   
 $R = \text{ceiling cup}$   
 $W = \text{width}$   
 $D = \text{depth}$



H1  
150cm

### SPECIFICATIONS

W = 45cm / 17.7in

D = 55cm / 21.7in

H1 = 150cm / 59.1in

H tot =

📦 50kg / 110.2lb

💡 10 x MAX 40W – G9

CE IP20  ENEC

### PACKAGING

📦 GW = 18 kg | 39,6 lb

📦 PKG = 0,33 m<sup>3</sup>

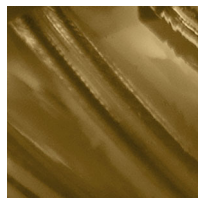
- Please note that size tolerances in handmade fixtures may range up to 5% of the overall size.
- Instruction sheet is supplied: fixture requires on site assembly by qualified electrician.
- Custom colours, finishes and sizes available, please contact Multiforme for more details.

W 45cm

### GLASS COLORS



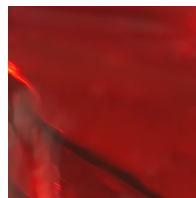
C - CRYSTAL



F2 - MOKA



S - SILK



X - RED

### FRAME FINISHES



X - STAINLESS  
STEEL

[www.multiforme.eu](http://www.multiforme.eu)  
Mail: [info@multiforme.eu](mailto:info@multiforme.eu)  
Tel: +39 049 938 7669

MULTIFORME