

MULTIFORME

LIGHT UP YOUR DREAMS



VILLA DORIA

design by MULTIFORME

SRE0757-10+5+5-CK

TIMELESS

КА РЕЦЦОНИКО



W - WIDTH 180 cm | 70.9 in

H1 - BODY HEIGHT 180 cm | 70.9 in

CEILING CANOPY



H2 min/max
(adjustable)

SPECIFICATIONS

W (width) = 180 cm | 70.9 in

D (depth) = 180 cm | 70.9 in

H1 (body height) = 180 cm | 70.9 in

H2 min/max = / cm | 0/0 in

H tot = H1 + H2

80 kg | 176.4 lb

20 x MAX 40W - E14

CE IP 20 ENEC

PACKAGING

GW = kg | 0.0 lb

PKG = m³

- Please note that size tolerances in handmade fixtures may range up to 5% of the overall size.
- Instruction sheet is supplied: fixture requires on site assembly by qualified electrician.
- Custom colours, finishes and sizes available, please contact Multiforme for more details.

GLASS COLORS



C - CRYSTAL

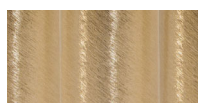


K - GOLD

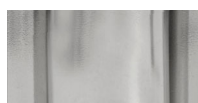
FRAME FINISHES



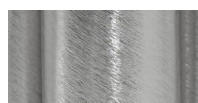
K - POLISHED GOLD



K1 - BRUSHED GOLD



N - POLISHED NICKEL



N1 - BRUSHED NICKEL

www.multiforme.eu
Mail: info@multiforme.eu
Tel: +39 049 938 7669

MULTIFORME