

# MULTIFORME

LIGHT UP YOUR DREAMS



## SERENADE

design by MULTIFORME

APP0370-2-F1V

TIMELESS

НАСТЕННЫЕ СВЕТИЛЬНИКИ



H1 - BODY HEIGHT 40 cm | 15.7 in

### SPECIFICATIONS

W (width) = 40 cm | 15.7 in

D (depth) = 30 cm | 11.8 in

H1 (body height) = 40 cm | 15.7 in

📦 1 kg | 2.20 lb

💡 2 x MAX 40W - E14

CE IP 20 ENEC

### PACKAGING

📦 GW = 6 kg | 13.22 lb

📦 PKG = 0.16 m<sup>3</sup>

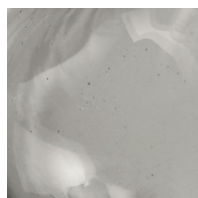
- Please note that size tolerances in handmade fixtures may range up to 5% of the overall size.
- Instruction sheet is supplied: fixture requires on site assembly by qualified electrician.
- Custom colours, finishes and sizes available, please contact Multiforme for more details.

W - WIDTH 40 cm | 15.7 in

### GLASS COLORS



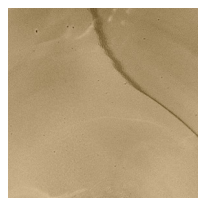
C - CRYSTAL



D - SMOKE



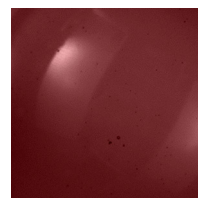
F - STRAW



F1 - NUT



K - GOLD

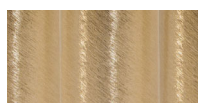


M2 -  
AUBERGINE

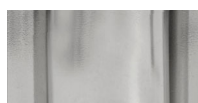
### FRAME FINISHES



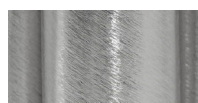
K - POLISHED  
GOLD



K1 - BRUSHED  
GOLD



N - POLISHED  
NICKEL



N1 - BRUSHED  
NICKEL

[www.multiforme.eu](http://www.multiforme.eu)  
Mail: [info@multiforme.eu](mailto:info@multiforme.eu)  
Tel: +39 049 938 7669

MULTIFORME