

# MULTIFORME

LIGHT UP YOUR DREAMS



## SERENADE

design by MULTIFORME

LP0370-8-WV-1

TIMELESS

ЛЮСТРЫ



W - WIDTH 100 cm | 39.4 in

H1 - BODY HEIGHT 75 cm | 29.5 in

CEILING CANOPY



H2 min/max  
(adjustable)

### SPECIFICATIONS

W (width) = 100 cm | 39.4 in

D (depth) = 100 cm | 39.4 in

H1 (body height) = 75 cm | 29.5 in

H2 min/max = 85/110 cm | 33.5/43.3 in

H tot = H1 + H2

📦 7 kg | 15.4 lb

💡 8 x MAX 40W - E14

CE IP 20 ENEC

### PACKAGING

📦 GW = 12 kg | 26.4 lb

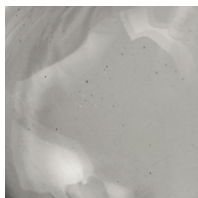
📦 PKG = 0.42 m<sup>3</sup>

- Please note that size tolerances in handmade fixtures may range up to 5% of the overall size.
- Instruction sheet is supplied: fixture requires on site assembly by qualified electrician.
- Custom colours, finishes and sizes available, please contact Multiforme for more details.

### GLASS COLORS



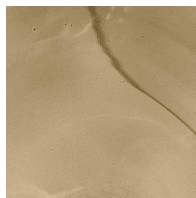
C - CRYSTAL



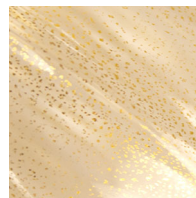
D - SMOKE



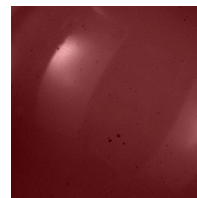
F - STRAW



F1 - NUT



K - GOLD

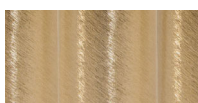


M2 -  
AUBERGINE

### FRAME FINISHES



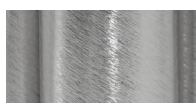
K - POLISHED  
GOLD



K1 - BRUSHED  
GOLD



N - POLISHED  
NICKEL



N1 - BRUSHED  
NICKEL

www.multiforme.eu  
Mail: info@multiforme.eu  
Tel: +39 049 938 7669

MULTIFORME