

MULTIFORME

LIGHT UP YOUR DREAMS

SS7651-S-DK

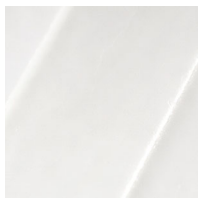
PROGRESSIVE

ПОДВЕСНЫЕ

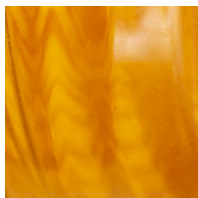


W - WIDTH 15 cm | 5.9 in

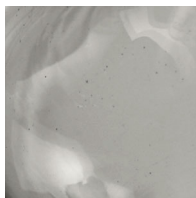
GLASS COLORS



1C - CATIN

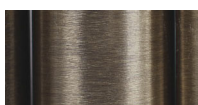


A2 - TANGERINE



D - SMOKE

FRAME FINISHES



B - BRUSHED
BURNISHED



K - POLISHED
GOLD



N - POLISHED
NICKEL

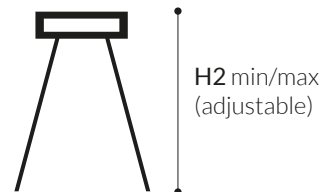
www.multiforme.eu
Mail: info@multiforme.eu
Tel: +39 049 938 7669

DANCER

design by MULTIFORME




CEILING CANOPY



SPECIFICATIONS

W (width) = 15 cm | 5.9 in
D (depth) = 15 cm | 5.9 in
H1 (body height) = 90 cm | 35.4 in
H2 min/max = / cm | 0/0 in
H tot = H1 + H2

2 kg | 4.4 lb
1 x MAX 40W - G9

CE IP 20  ENEC

PACKAGING

GW = kg | 0.0 lb
PKG = m³

- Please note that size tolerances in handmade fixtures may range up to 5% of the overall size.
- Instruction sheet is supplied: fixture requires on site assembly by qualified electrician.
- Custom colours, finishes and sizes available, please contact Multiforme for more details.

H1 - BODY HEIGHT 90 cm | 35.4 in

MULTIFORME