

# MULTIFORME

LIGHT UP YOUR DREAMS



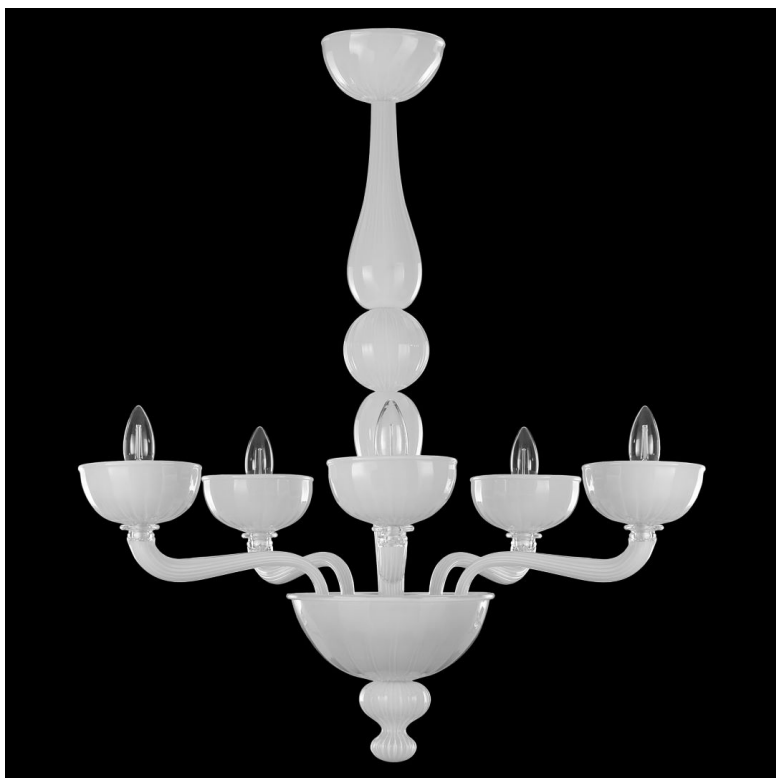
## EDGAR

design by MULTIFORME

L0375-5-W

TIMELESS

ЛЮСТРЫ



W - WIDTH 70 cm | 27.6 in

H1 - BODY HEIGHT 80 cm | 31.5 in

CEILING CANOPY



H2 min/max  
(adjustable)

### SPECIFICATIONS

W (width) = 70 cm | 27.6 in

D (depth) = 70 cm | 27.6 in

H1 (body height) = 80 cm | 31.5 in

H2 min/max = null/null cm | 0/0 in

H tot = H1 + H2

6 kg | 13.2 lb

5 x MAX 60W - E14

CE IP 20 ENEC

### PACKAGING

GW = kg | 0.0 lb

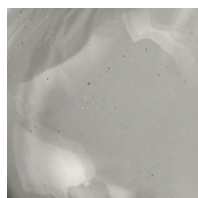
PKG = m<sup>3</sup>

- Please note that size tolerances in handmade fixtures may range up to 5% of the overall size.
- Instruction sheet is supplied: fixture requires on site assembly by qualified electrician.
- Custom colours, finishes and sizes available, please contact Multiforme for more details.

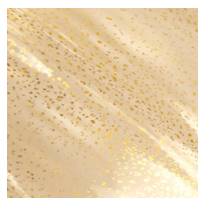
### GLASS COLORS



C - CRYSTAL



D - SMOKE



K - GOLD



S - SILK

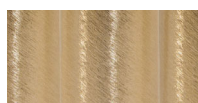


W - WHITE

### FRAME FINISHES



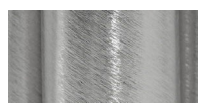
K - POLISHED  
GOLD



K1 - BRUSHED  
GOLD



N - POLISHED  
NICKEL



N1 - BRUSHED  
NICKEL

www.multiforme.eu  
Mail: info@multiforme.eu  
Tel: +39 049 938 7669

MULTIFORME