

# MULTIFORME

LIGHT UP YOUR DREAMS



## EDGAR

design by MULTIFORME

AP0375-2-W

TIMELESS

НАСТЕННЫЕ СВЕТИЛЬНИКИ



H1 - BODY HEIGHT 25 cm | 9.8 in

### SPECIFICATIONS

W (width) = 30 cm | 11.8 in

D (depth) = 25 cm | 9.8 in

H1 (body height) = 25 cm | 9.8 in

1.5 kg | 3.3 lb

2 x MAX 60W - E14

CE IP 20 U ENEC

### PACKAGING

GW = kg | 0.0 lb

PKG = m<sup>3</sup>

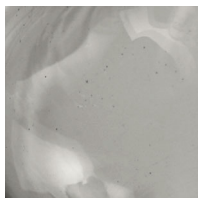
- Please note that size tolerances in handmade fixtures may range up to 5% of the overall size.
- Instruction sheet is supplied: fixture requires on site assembly by qualified electrician.
- Custom colours, finishes and sizes available, please contact Multiforme for more details.

W - WIDTH 30 cm | 11.8 in

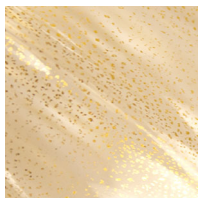
### GLASS COLORS



C - CRYSTAL



D - SMOKE



K - GOLD



S - SILK

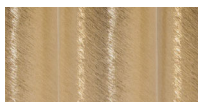


W - WHITE

### FRAME FINISHES



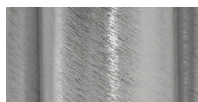
K - POLISHED GOLD



K1 - BRUSHED GOLD



N - POLISHED NICKEL



N1 - BRUSHED NICKEL

www.multiforme.eu  
Mail: info@multiforme.eu  
Tel: +39 049 938 7669

MULTIFORME