

MULTIFORME

LIGHT UP YOUR DREAMS



METROPOLE

design by MULTIFORME

LE0380-15+10+5-D2

TIMELESS

ЛЮСТРЫ



H1 - BODY HEIGHT 165 cm | 65.0 in

CEILING CANOPY



H2 min/max
(adjustable)

SPECIFICATIONS

W (width) = 150 cm | 59.1 in

D (depth) = 150 cm | 59.1 in

H1 (body height) = 165 cm | 65.0 in

H2 min/max = / cm | 0/0 in

H tot = H1 + H2

45 kg | 99.2 lb

30 x MAX 40W - E14

CE IP 20 ENEC

PACKAGING

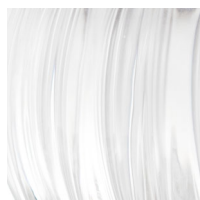
GW = kg | 0.0 lb

PKG = m³

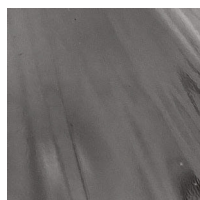
- Please note that size tolerances in handmade fixtures may range up to 5% of the overall size.
- Instruction sheet is supplied: fixture requires on site assembly by qualified electrician.
- Custom colours, finishes and sizes available, please contact Multiforme for more details.

W - WIDTH 150 cm | 59.1 in

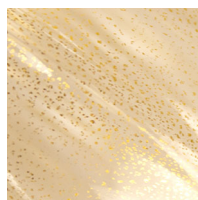
GLASS COLORS



C - CRYSTAL



D2 - GRAPHITE

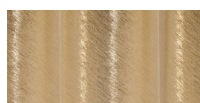


K - GOLD

FRAME FINISHES



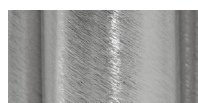
K - POLISHED
GOLD



K1 - BRUSHED
GOLD



N - POLISHED
NICKEL



N1 - BRUSHED
NICKEL

www.multiforme.eu
Mail: info@multiforme.eu
Tel: +39 049 938 7669

MULTIFORME