

# MULTIFORME

LIGHT UP YOUR DREAMS



## TEMPTATION

design by MULTIFORME

**BSR3330T-18-DWN1**

PROGRESSIVE

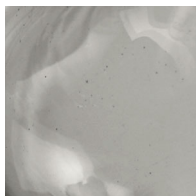
ПОДВЕСНЫЕ



H1 - BODY HEIGHT 150 cm | 59.1 in

W - WIDTH 225 cm | 88.6 in

### GLASS COLORS

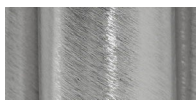


D - SMOKE



W - WHITE

### FRAME FINISHES



N1 - BRUSHED  
NICKEL

[www.multiforme.eu](http://www.multiforme.eu)  
Mail: [info@multiforme.eu](mailto:info@multiforme.eu)  
Tel: +39 049 938 7669

### CEILING CANOPY



H2 min/max  
(adjustable)

### SPECIFICATIONS

W (width) = 225 cm | 88.6 in

D (depth) = 160 cm | 63.0 in

H1 (body height) = 150 cm | 59.1 in

H2 min/max = / cm | 0/0 in

H tot = H1 + H2

50 kg | 110.2 lb

18 x MAX 40W - E14

CE IP 20 ENEC

### PACKAGING

GW = kg | 0.0 lb

PKG = m<sup>3</sup>

- Please note that size tolerances in handmade fixtures may range up to 5% of the overall size.
- Instruction sheet is supplied: fixture requires on site assembly by qualified electrician.
- Custom colours, finishes and sizes available, please contact Multiforme for more details.

# MULTIFORME