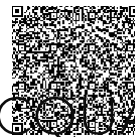


# MULTIFORME

LIGHT UP YOUR DREAMS



## ABSOLUTE D&#039;AQUILA

design by MULTIFORME

**SSP3601E-CND**

PROGRESSIVE

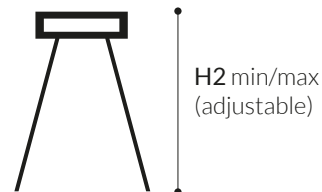
ПОДВЕСНЫЕ



W - WIDTH 142 cm | 55.9 in

H1 - BODY HEIGHT 130 cm | 51.2 in

CEILING CANOPY



### SPECIFICATIONS

W (width) = 142 cm | 55.9 in

D (depth) = 55 cm | 21.7 in


H1 (body height) = 130 cm | 51.2 in

H2 min/max = / cm | 0/0 in

H tot = H1 + H2

📦 45 kg | 99.2 lb

💡 18 x MAX 25W - G9

CE IP 20  ENEC

### PACKAGING

📦 GW = kg | 0.0 lb

📦 PKG = m<sup>3</sup>

- Please note that size tolerances in handmade fixtures may range up to 5% of the overall size.
- Instruction sheet is supplied: fixture requires on site assembly by qualified electrician.
- Custom colours, finishes and sizes available, please contact Multiforme for more details.

### GLASS COLORS



C - CRYSTAL

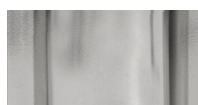


K - GOLD

### FRAME FINISHES



K - POLISHED  
GOLD



N - POLISHED  
NICKEL

[www.multiforme.eu](http://www.multiforme.eu)  
Mail: [info@multiforme.eu](mailto:info@multiforme.eu)  
Tel: +39 049 938 7669

# MULTIFORME